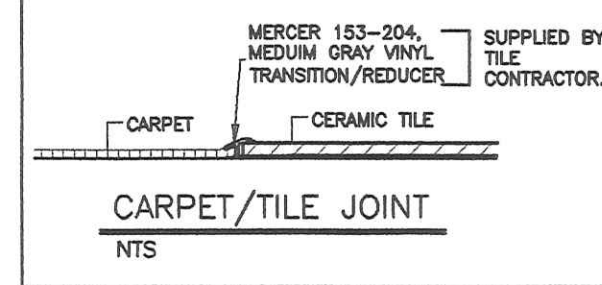


TOILET ROOM NOTE:
SHOE SHOW PREFERS TO HAVE ONLY ONE TOILET ROOM IF CODE WILL ALLOW. AVERAGE NUMBER OF EMPLOYEES WORKING AT THE SAME TIME IS TWO OR THREE.



DESK NOTE:
DESK:
30" AFF W/2 SHELVES ABOVE, DYE TABLE:
36" AFF W/2 SHELVES ABOVE

FLOOR TILE NOTE
18 SF T22
TILE CONTRACTOR TO SUPPLY CARPET MASTIC & BLACK VINYL TRANSITION STRIP & INSTALL ALL OF THE ABOVE MENTIONED ITEMS.
TILE CONTR. TO SEAL ALL FLOOR GROUT AND COVER ALL FLOOR TILE W/CRAFT PAPER OR CARDBOARD WHEN INSTALLATION IS FINISHED.

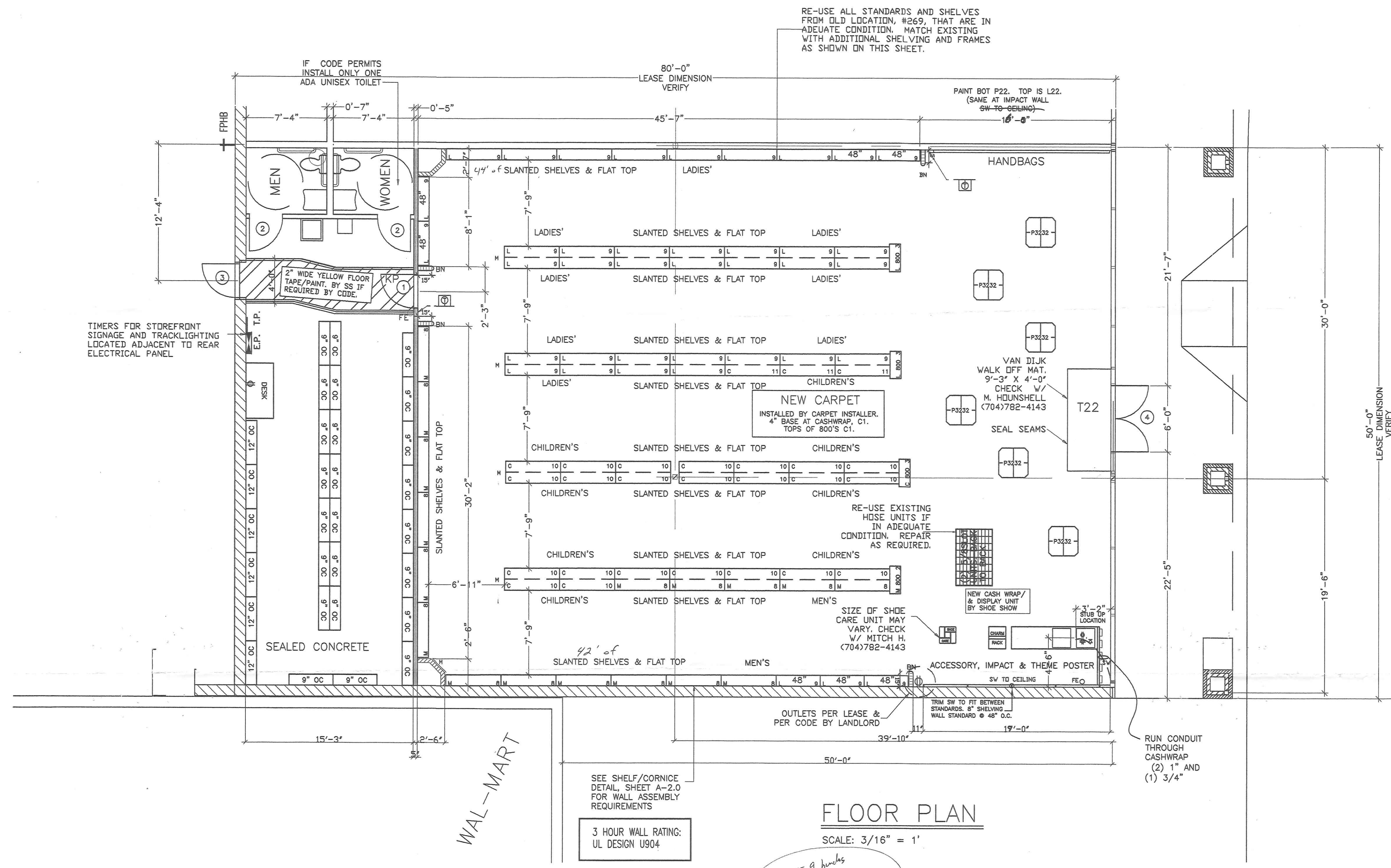
TOILET ROOM
1 HC WATER CLOSET W/RIM MOUNTED AT 18" AFF.
PROVIDE GRAB BARS AS SHOWN AND MOUNT ACCORDING TO SBCCI 1997 REQUIREMENTS. MOUNT LAVATORY MIRROR W/BOTTOM AT 40" AFF.
MOUNT LAVATORY TO PROVIDE 29" CLEAR SPACE BELOW. INSULATE DRAIN & HW SUPPLY LINE. PROVIDE & INSTALL HC SIGNAGE AS REQUIRED.
PLUMBING CONTRACTOR TO ENSURE COMPLIANCE W/ ALL CODES & ADA.

WATER HEATER NOTE:
+ A WATER HEATER IS NOT TO BE INSTALLED UNLESS IT IS SPECIFICALLY REQUIRED BY THE LOCAL BUILDING/PLUMBING CODE.
+ PLUMBING CONTRACTOR SHALL NOT SUBMIT BID UNTIL DETERMINING IF A HOT WATER HEATER IS REQUIRED.

DOOR SCHEDULE
1 STOCK ROOM DOOR: NEW 36x80 HC WOOD DOOR. KICK PLATE, KP & PAINT P21.
2 TOILET ROOM DOOR: NEW 36x80 SC WOOD DOOR. PAINT DOOR & TRIM, P21.
3 NEW/EXISTING 3'0x6'8" HM DOOR W/ PANIC BAR. SEE HARDWARE SCHEDULE BELOW. PAINT W/ 'RUSTOLIUM' TYPE PAINT COLOR TO BE PER STANDARD OR MEDIUM GRAY.
4 FRONT ENTRY DOOR: PR OF 36x84 GLASS & ANODIZED ALUMINUM STOREFRONT DOORS W/TEMPERED GLASS & BRONZE FINISH.

DOOR HARDWARE
1. STOCK ROOM DOOR: BUTTS; PASSAGE SET -SCHLAGE S100-LEV (LEVER HANDLES) W/626 FINISH; IVES 410 (B10) WALL BUMPER.
2. TOILET DOORS: BUTTS; PRIVACY SET-SCHLAGE S40D-LEV (LEVER HANDLES) W/ 625 FINISH ON TOILET SIDE AND 626 FINISH ON OUTSIDE; IVES 436 (B10) FLOOR STOP.
3. BACK EXIT DOOR: 1 1/2 PR. BUTTS; HAGER BB 179; 4 1/2 X 4 1/2 USP NRP; SCHLAGE S51PD-RB (LEVER HANDLE INSIDE, ORBIT HANDLE OUTSIDE), 626 FINISH; LON No. 4040 CLOSER/THRESHOLD-ZERO #850 SERIES; SWEEP-ZERO #394; FULL RUBBER WEATHERSTRIPPING, ZERO #485.
4. FRONT ENTRY DOORS: HARDWARE BY DOOR MANUF. W/ CLY. LOCK (KEY OUTSIDE, TURN LATCH INSIDE) FINISH TO MATCH DOOR, OVERHEAD CLOSER, ALUMINUM THRESHOLD (CAULKED), FULLY WEATHERSTRIPPED W/ RUBBER SEAL @ BOTTOM.

FINISH SCHEDULE
L21 - NEVAMAR S-7-36T, PRECISION WHITE. SLATWALL, CASH WRAP, TRI-SIDES.
L22 - NEVAMAR S-3-16G, REGIMENTAL BLUE. CORNICE.
ALL PAINT: ProMor 400
P21 - SHERWIN WILLIAMS CUSTOM COLOR, WHITE. EG-SHEL WALLS, SHEETROCK CEILINGS
P22 - SHERWIN WILLIAMS CUSTOM COLOR, BLUE 7-94, ALKYD EG-SHEL. CROWN, TRIM, DOOR CASING.
T21 - MANNINGTON B63, SILVER STONE, 8"x8" LIGHT GRAY, NON-SKID, CERAMIC TILE
T22 - AMERICO GYPSY BARRIER MATTING. 48"x84" BLUE. CUT TO INSET IN TILE.
FLOOR GROUT: BONSAI 125W, STERLING SILVER. USE BASIC 12"x12" VOT TILE IN REST ROOM(S). CARPET: RICHMOND COMMERCIAL CARPET, PERFORMANCE BLUE. USE 4" BLACK VINYL BASE AT WALLS



RE-USE ALL STANDARDS AND SHELVES FROM OLD LOCATION, #269, THAT ARE IN ADEQUATE CONDITION. MATCH EXISTING WITH ADDITIONAL SHELVING AND FRAMES AS SHOWN ON THIS SHEET.

SHOE CAPACITY

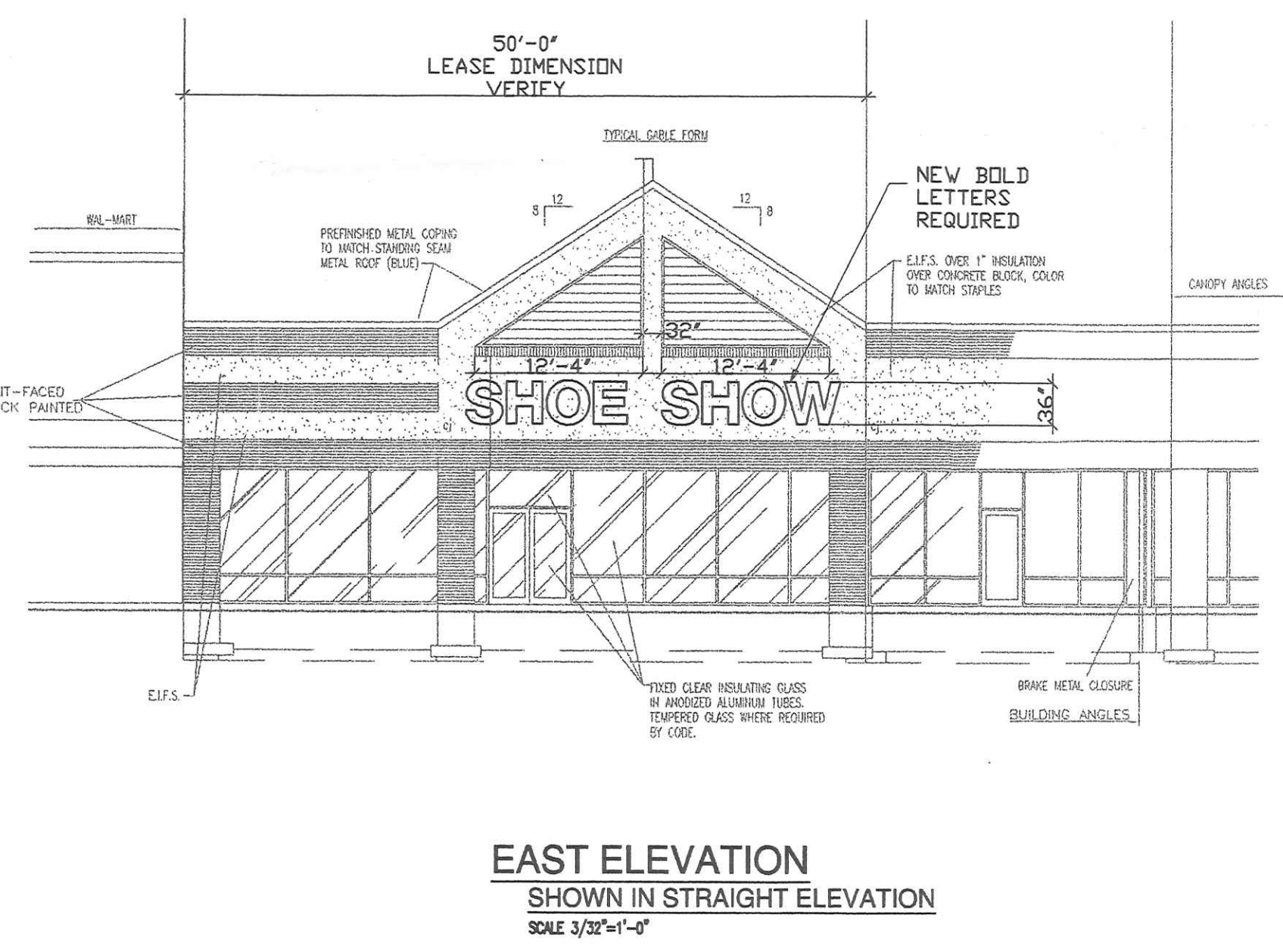
M - 1723
C - 2370
L - 3088
TOTAL PAIRS 7181

STORE TO BE RUN BY SIZE, NOT MIXING BRANDED AND UN-BRANDED SHOES.

FLOOR PLAN
SCALE: 3/16" = 1'

*90' 9" bushes
-
with sublet -
5' bushes built back on*

ALL WORK NOT SPECIFIED IN THE RESPONSIBILITY CHART BY SHOE SHOW IS BY LANDLORD.



EAST ELEVATION
SHOWN IN STRAIGHT ELEVATION
SCALE 3/32"=1'-0"

WORK RESPONSIBILITY CHART

DESCRIPTION	BY		INSTALLED BY	SUPPLIED BY
	LL-LANDLORD	SS-SHOW		
SLAB(S)	LL	LL		
CONDUIT OR POWER POLE	SS	SS		
PLUMBING ROUGH-IN(FROM MAIN SUPPLY TO STORE)	LL	LL		
DEMISING WALLS TO DECK IN PAINTABLE COND.	LL	LL		
STOCKROOM WALL WITH DOOR	LL	LL		
STOREFRONT WITH DOUBLE DOOR	LL	LL		
CHAIRS	SS	SS		
CERAMIC OR MARBLE TILE	SS	SS		
COVE BASE (RETAIL)	SS	SS		
PAINTING	SS	SS		
FINISH PLUMBING AND FIXTURES (PER CODE)	LL	LL		
CEILING	LL	LL		
H.V.A.C. W/ THERMOSTAT W/ LL WARRANTY	LL	LL		
SECURITY SYSTEM	SS	SS		
ELECTRICAL (PER LOCAL CODE)	LL	LL		
LIGHTING	LL	LL		
2 X 4'S LAYING	LL	LL		
TRACK LIGHTING	SS	SS		
CORNISE LIGHTING	N/A	N/A		
WALL WASHERS	SS	SS		
EMERGENCY LIGHTS	SS	SS		
PENDANT LIGHTS	N/A	N/A		
COMPACT FLUORESCENT DOWN LIGHTS	N/A	N/A		
SINGLE TUBE FLUORESCENT STRIP LIGHTS	SS	SS		
FANS	SS	SS		
SPRINKLERS (PER CODE) - IF REQUIRED	LL	LL		
TELEPHONE CONDUIT TO SPACE	SS	SS		
TELEPHONE SERVICE AND WIRING	SS	SS		
SIGNAGE - SAME TYPE, CHANGE TEXT ONLY	SS	SS		
FIXTURES	SS	SS		
SLATWALL	SS	SS		
UTILITIES	SS	SS		

FLOOR PLAN KEY

	NEW/EXISTING WALL TO REMAIN. PAINT READY. MAINTAIN FIRE RATING. MUST MEET ALL APPLICABLE CODES. PAINT, P21.
	3 5/8" MET. STUDS @ 24" OC TO FIN. CLG. HT. OR AS NOTED. FINISH W/ 5/8" GYP BD 2 SIDES. BLIND WALL TO 8" AFF. PAINT P21.
	3-5/8" 20 GA METAL STUDS @ 16" O.C. TO 84" AFF. FINISH W/ 5/8" GYP. BD. 1 OR 2 SIDE(S). PAINT P21.
	DIGITAL PROGRAMMABLE THERMOSTAT. INCLUDE ACRYLIC, LOCKING COVER.
	110V QUADRUPLEX OUTLET / DEDICATED P.O.S. 110V DUPLEX. INSTALL BOXES HORIZONTAL. TOP SURFACE 5" AFF.
	TELEPHONE JACK. PULL 16 WIRE LINE.
	END PANEL MIRROR BY MIRROR CONTRACTOR. 23"x45" AT 80". SET BOTTOM 12" AFF. USE MASTIC & POLISHED BRASS J-CHANNEL TOP AND BOTTOM. 18"x66" AT ANGLED WALLS. MOUNT AT 12" AFF. OTHER SIZES AS NOTED.
	SLATWALL DISPLAY AREA. SLATS @ 4" OC, BOT SET @ 12" AFF. TOP HEIGHTS AS SHOWN. TRIM AS NOTED ON PLANS.
	KICK PLATE FOR STOCK ROOM DOOR. 1/16" CLEAR POLYCARB. 34"H X 35"W. MOUNT W/SCREWS THRU PRE-DRILLED HOLES.
	FIRE EXTINGUISHER.

STORE NUMBER 269 **RELO**

FLOOR PLAN
SHOE SHOW
HERITAGE TOWNE CENTER
NAPOLEON, OH

SCALE: 3/16" = 1'
BY: GPB
START DATE: 08-07-01

SIZE: 4000 SQ FT
SHAPE: 50' X 80'
CAPACITY: 7181
CHK'D BY: A.G.M.-8/8/01

R.B.T.
04-08-02
OPERATIONS
00-00-00

ISSUE DATE:
08-07-01

REVISION DATES:
PER LL NOTES: 3/19/02
NEW SS: 3/28/02
PER RBT - 4/9/02

ISSUED TO:
CONST. DEPT.
OPERATIONS
BLD. INSPECT.
ZONING

SHOE SHOW (SPACE #2)
SCOTT STREET
NAPOLEON, OH
LL REP-REG. PROP., INC. (937) 291-6317

SHOE SHOW, INC.
776 FLORENCE STREET
P.O. BOX 648
CONCORD, NC 28025
PH: (704) 782-4143
FAX: (704) 782-8411

SHEET NUMBER
A-1.0
SPACE # 2